

Stanwood Police Department

December 2013

Administrative Personnel

Chief Rick Hawkins
Sergeant Rob Martin
Deb Sousa – Stanwood City Employee
Peg Girard – Stanwood City Employee
Linda Thayer – Stanwood City Employee

Operational Personnel

	Assigned	Vacancies	Percentage
Sergeants	2	0	100%
MPD	0	0	N/A
Deputies	6	0	100%
SRO	1	0	100%
Detectives	1	0	100%
Total	10	0	100%

Personnel:

Peggy Girard is assigned part-time to the Snohomish County New World Systems Project. The new system is expected to be implemented in 2014.

Area of Operation

The City of Stanwood contracts its police services through the Snohomish County Sheriff's Office. The population for Stanwood is currently 6,220, however due to the makeup of the community the service population is 40,000. Stanwood's city limit encompasses 3.78 square miles. City density per square mile is 1,967 with 1,050 persons living in the designated flood plain area.



COMPSTAT REPORT

Type of Crime	December 2013	December 2012	Year to Date
Homicide	0	0	0
Rape	0	0	2
Robbery	0	0	2
Assault	2	6	58
Burglary	0	2	28
Larceny	10	8	136
Motor Vehicle Theft	2	1	24
General	December 2013	December 2012	Year to Date
Calls for Service	597	696	9092
Case Reports	54	51	897
Traffic Collisions	13	4	123
Arrests (Adult/Juvenile)	15	18	230
Investigations (Open Cases)	11	22	N/A
Investigations (Closed Cases)	8	0	N/A
Impaired Driving Arrests	0	0	1
Infractions Issued	12	4	294
Public Disclosure Requests	35	41	368
Concealed Pistol License Permits	24	30	359
Fingerprinting & Approx. timeframe	27 @7 hrs	46 @ 10 hrs	377 @ 112 hrs, 5 min

Fingerprinting Services:(New listing for 2013). The Stanwood Police Department provides fingerprint services to the public for Concealed Pistol Licenses and job applications to name just a few. We are now including this information into the monthly report.

Stanwood School Dist. Resource Officer (SRO) Activity Report

Stanwood Camano School District Demographics:

1. 5 Elementary Schools (3 in the City of Stanwood)
2. 2 Middle Schools
3. One High School (with two alternative campuses).

There are 4,482 students district wide. 1,600 students are assigned to the High School campus and there are 1,085 students in the middle school system. Deputy Jensen is responsible for responding to any student related issue at all of the schools within Stanwood City limits.

Stanwood High School SRO Activity Report 12/1/2013 - 12/31/2013

Stanwood High School

Administrative

Advise Staff (s)	4
Assist School Administrator	14
Assist Security	8
Paperwork	7

Counseling

Advise Parents	1
Student	8

Law Enforcement

Follow up	1
MIP	2
Theft 3	1

Security

Athletic Event	2
Cafeteria	11
Parking Lot	5
Patrol neighborhood	10
Patrol School Grounds	2

Teaching

Drivers Education	1
-------------------	---

Lincoln Hill High School

Administrative

Assist School Administrator 2

Counseling

Student 1

Law Enforcement

Assault 4 1

Port Susan Middle School

Administrative

Assist School Administrator 1

Counseling

Student 1

Stanwood Middle School

Administrative

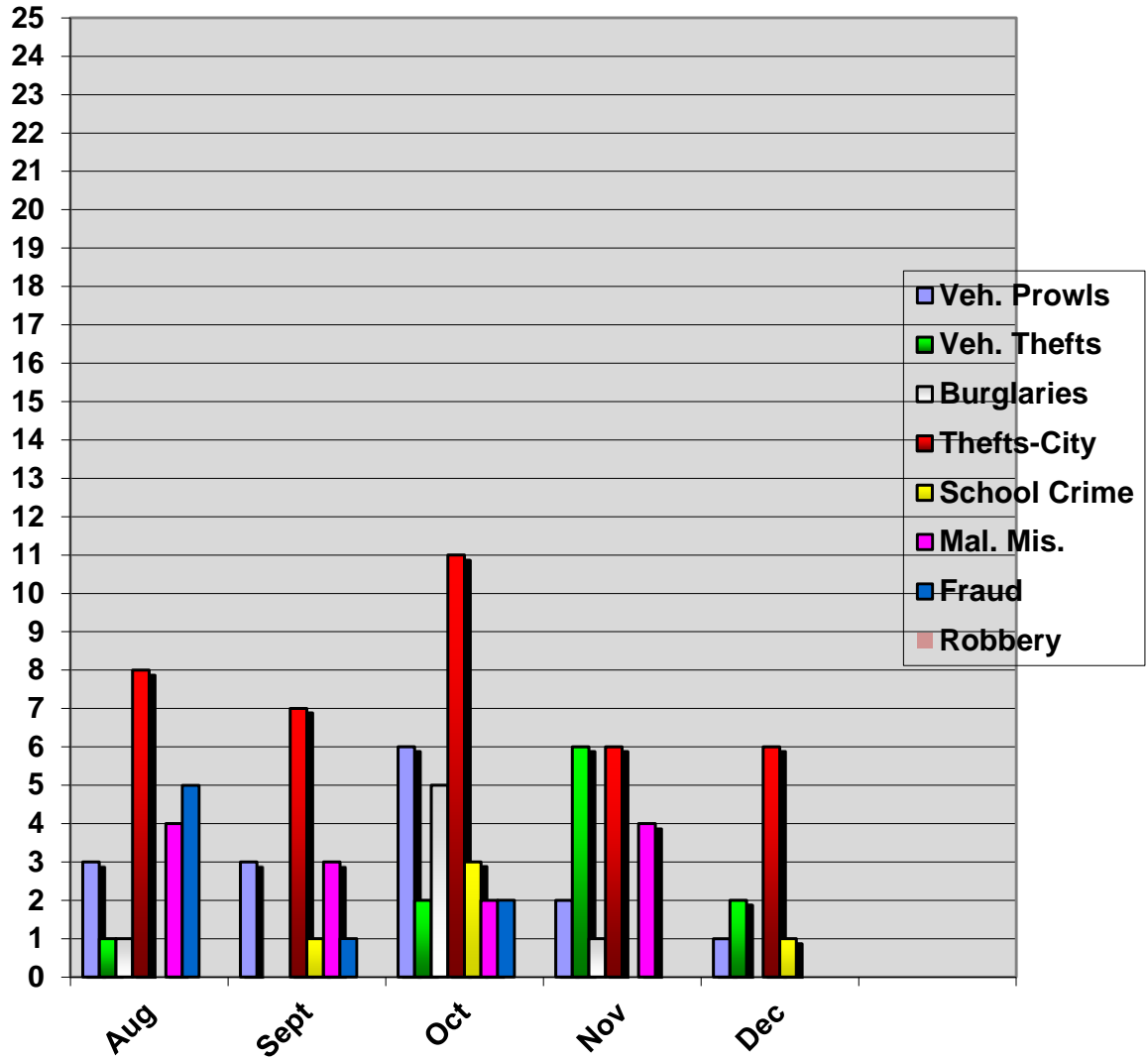
Assist School Administrator 1

Detective Report – December 2013

The burglary case I have been working on is finally coming to the end. It actually ended up being two burglaries which occurred the same weekend. The initial burglary involved three persons. In the first burglary three suspects approached the residence by water in a boat. Several items were taken along with the victim's boat which was sitting on the bank of the river. This second boat was loaded up with the stolen items from around the house then used to ferry the items down the river back to the boat launch. Two of the suspects returned later that night with a new third suspect. This new person helped further clean out the house. A weapon was stolen along with a Corvette and several house hold items including a TV, Printer, Tool Box, entrainment system. This third suspect later put fraudulently placed the Corvette in his name. He was stopped the day before his birthday in the stolen Corvette and arrested on a DOC escape community custody warrant and booked. Three of the suspects in this case have been contacted. One of the suspects has confessed to the first burglary. Phone conversations from the jail between two of the main suspects has ended up implicating them all.

This case is tied to another Stanwood case I am working on OO-13-00867 the Intimidating a Witness case. This case originally began on 12-04-13 and due to the circumstances of what occurred at the witnesses residence was linked to the burglary case. The phone conversations from the jail between the two suspects support the witness's statements involving the intimidation charge. The intimidating suspect was arrested on 12-24-13 after a warrant for his body was written. Thanks to the assistance of Sgt Martin, Dep Espeland and the Island County Sheriff's Office he was picked up at his residence without incident and booked into the Snohomish County Jail on three counts of Intimidating a Witness bail was set at 50,000. He bailed out three days later. Charges in the burglary case are pending on all four individuals.

December property crime statistics



STATISTICAL COMPARISON FOR Dec, 2010, 2011, 2012 & 2013

